

5

Mousing Around

LESSON PLAN

Lesson Outcomes

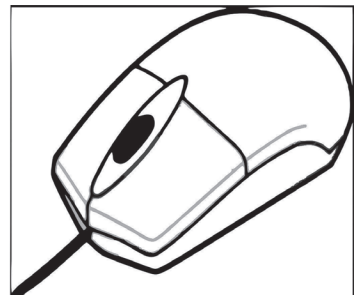
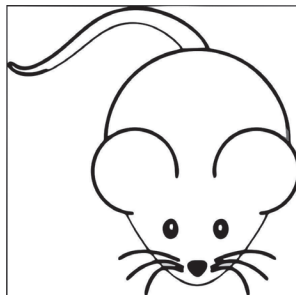
After the end of the lesson, students will be able to:

- » Identify the computer's mouse.
- » Describe the use of mouse.
- » Identify the mouse arrow.
- » Label the parts of a scroll mouse.
- » List and identify different types of mouse.
- » Learn to use various mouse controls, such as:
 - Holding a mouse
 - Clicking
 - Double-clicking
 - Right-clicking
 - Drag and drop
- » Identify and describe the need for a mouse pad.

WARM UP

Colour the computer mouse.

Ans. Do it yourself.



CHAPTER NOTES

Using a Mouse

- » Mouse is a part of the computer. It has two buttons and a scroll wheel.
- » You use a mouse to point at icons on the computer screen.
- » When we move the mouse, an arrow moves on the screen.

Using the mouse:

- You should place the mouse on a mouse pad.
- This pad helps you to move the mouse smoothly.
- Your thumb should be on one side.
- Your little finger and ring finger should be on the other side of the mouse.

Left-click:

- Press the left mouse button once and release it.
- We generally use the term 'click' for left-click.

Double-click:

- Press the left mouse button twice quickly and release it.
- We can use a double-click to open an icon on the screen.

DEMONSTRATION

- » Demonstrate how a left-handed child and a right-handed child should hold a mouse.

LAB ACTIVITIES

Try the following actions with the mouse and tell whether the action requires a single click of the mouse or a double-click. Then arrange them in correct columns.

1. Click on the Start button.

2. Click on All Programs.
3. Select Accessories
4. Click the Paint option.
5. Open any saved file.
6. Click on the Close button of Paint window.
7. Go to Documents.
8. Double-click on My Computer on the monitor.

Use single-click	Use double-click

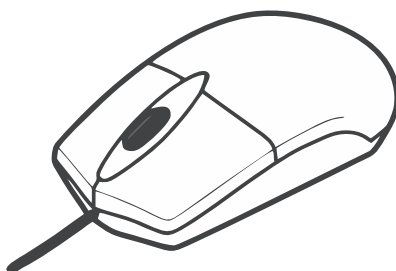
ASSESSMENT

- » Help the students to hold a mouse correctly. Guide them to point, click and double-click.

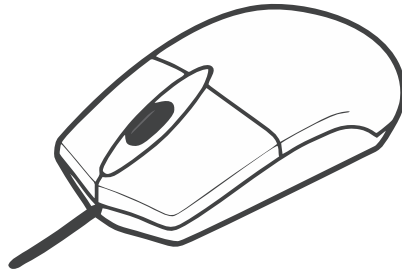
SUGGESTED CLASS ACTIVITIES

A. Colour the mouse button that:

1. You commonly use to click the mouse.



2. You will use to double-click the mouse.



B. Circle the correct answer:

1. Which picture shows a double-click?

(a)



(b)



2. Which of these is a computer part?

(a)



(b)

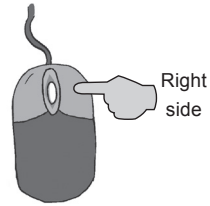


3. Which picture shows a right-click?

(a)



(b)

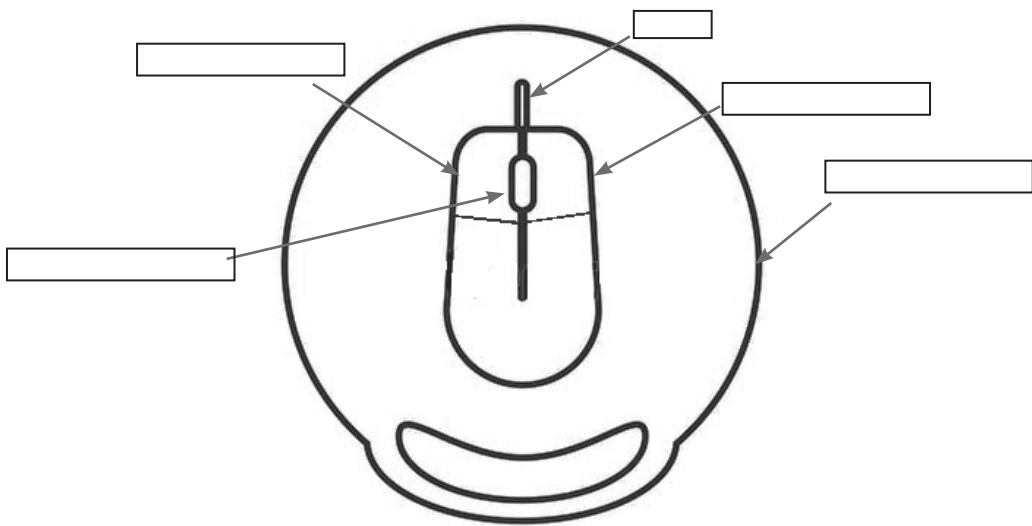


C. Find the words given in the box, in the grid and circle them.

pointer	moves	fast	drag	tail	small
three	buttons	draw	play	games	select

A	T	D	G	E	O	Q	B	U	P	T	P	Q	C	B
T	H	R	E	E	B	U	T	T	O	N	S	R	K	N
J	N	A	V	B	O	Y	A	E	I	Q	F	P	W	V
J	Y	W	E	P	L	K	I	R	N	E	K	L	B	A
S	Q	W	S	M	A	L	L	P	T	Q	R	P	W	V
P	E	P	L	A	Y	G	A	M	E	S	A	G	R	R
V	G	C	Z	V	I	N	K	D	R	A	G	A	T	S
Q	R	P	E	E	K	S	E	L	E	C	T	K	N	V
V	S	M	O	V	E	S	F	A	S	T	N	Q	C	B
J	Y	W	E	P	L	K	I	R	N	E	K	L	B	A
A	T	D	G	E	O	Q	B	U	P	T	P	Q	C	B
V	G	C	Z	V	I	N	K	D	R	A	G	A	T	S

D. Label the diagram and colour the picture.



Right Button	Left Button	Wire
Mouse Pad	Scroll Wheel	