

# Transportation in Animals and Plants

## ORAL QUESTIONS

**A. Answer these questions orally.**

1. Name the instrument used to measure heart beat.
2. What are the extremely thin tubes that join arteries and veins called?
3. Name the excretory organs present in humans that filter blood to remove nitrogenous wastes.
4. Name the two components of blood.
5. What is the nonliving liquid part of the blood called?

**B. Fill in the blanks.**

1. Complex animals have a well-developed \_\_\_\_\_ system.
2. Transport in plants is done by \_\_\_\_\_ system.
3. \_\_\_\_\_ carries oxygen and gives red colour to our blood.
4. \_\_\_\_\_ help to stop bleeding by clotting the blood.
5. The largest artery in our body is the \_\_\_\_\_.
6. Our heart is \_\_\_\_\_ chambered.
7. The \_\_\_\_\_ vessels transport water and minerals in plants.

## PUZZLES/QUIZ

**C. Find out atleast ten terms related to chapter Transportation in Animals and Plants from the following word maze. Also write a few lines about them.**

H	A	C	N	Q	D	P	B	S	B	M
D	A	R	T	E	R	Y	D	E	L	Z
P	B	E	X	C	R	E	T	I	O	N
L	L	T	M	C	U	C	R	K	O	K
A	O	S	M	O	S	I	S	F	D	M
T	L	E	U	J	G	T	F	Z	N	G
E	T	C	A	P	I	L	L	A	R	Y
L	V	S	W	J	P	H	L	O	E	M
E	H	E	A	R	T	X	P	B	Y	H
T	R	G	D	I	A	L	Y	S	I	S
S	Y	O	X	Y	L	E	M	E	I	N

---

---

---

---

---

---

---

---

---

---

**D. Satvik’s teacher asked him to write a paragraph describing the structure of the human heart. He made certain mistakes while writing. Underline these mistakes and rewrite the paragraph correctly.**

Our heart is two-chambered. It has one auricle and one ventricle. The heart is divided into two halves by a thin muscular septum. Each half has a ventricle above and an auricle below. The left side of the heart has deoxygenated blood while the right half has oxygenated blood. The septum allows mixing of deoxygenated and oxygenated blood present in the right and left halves of the heart.

---

---

---

---

---

---

---

---

**E. Try to answer.**

1. Name the scientist who discovered that the blood circulates in our body in a closed system of vessels.  

---
2. What is dialysis?  

---

3. About how much blood circulates in our body?

---

4. About how much urine is excreted by our body in 24 hours?

---

5. What is the composition of urine?

---

### **CLASS TEST**

#### **F. Very short answer questions.**

1. What is blood?

---

2. What does the circulatory system consist of?

---

3. What is haemoglobin?

---

4. What is a heart beat?

---

5. What are platelets?

---

6. How many times does a human heart beat per minute?

---

#### **G. Short answer questions.**

1. What is the need for transport system?

---

---

2. List the functions of blood.

---

---

---

3. What are the functions of plasma?

---

---

4. List the functions of the following:

(a) Red blood cells

---

(b) White blood cells

---

(c) Haemoglobin

---

(d) Blood platelets

---

5. Differentiate between.

(a) Auricles and Ventricles

AURICLES	VENTRICLES

(b) Xylem and Phloem

XYLEM	PHLOEM

6. How does skin act as an excretory organ?

---

---

7. Why do we sweat a lot in summer?

---

---

8. Why do our coloured clothes develop white patches in the areas of under arms?

---

---

9. What are the functions of the vascular system?

---

---

**H. Long answer questions.**

1. Label the diagram shown alongside. What are the functions of the following.

(a) Pulmonary artery

---

---

---

---

---

---

---

(b) Pulmonary vein

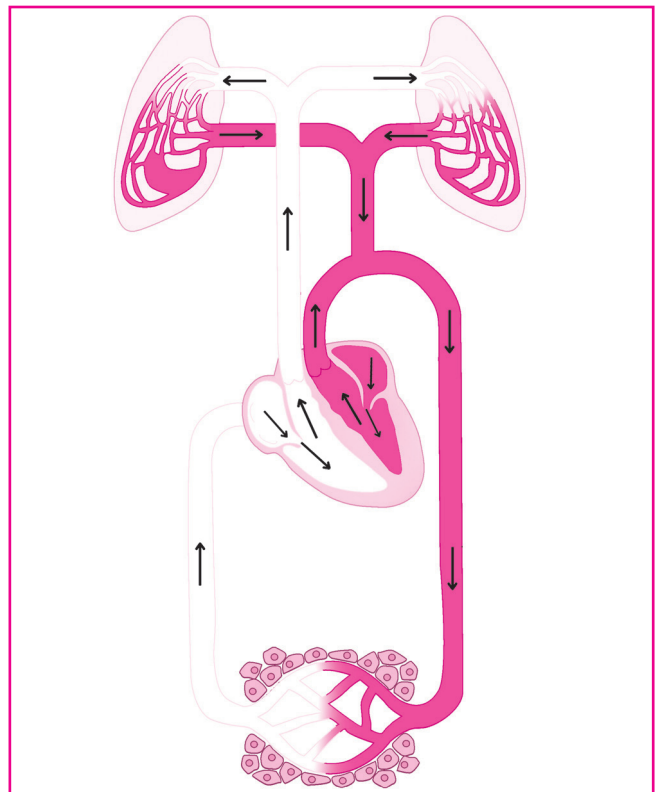
---

---

---

---

---



2. How is the 'lub' and 'dub' sound made by heart?

---

---

---

3. Explain how the toxic wastes get removed from our body?

---

---

---

---

4. How does transportation of food takes place in plants?

---

---

---

---

### **HOME ASSIGNMENT**

#### **I. Think and answer.**

1. What will happen if there are no white blood cells in blood?

---

---

---

2. What will happen if the oxygenated and deoxygenated blood get intermixed?

---

---

---

3. Why is it necessary to excrete waste products?

---

---

4. Akram drew the diagram of human excretory system but forgot to label it.

(a) Label the diagram.

---

---

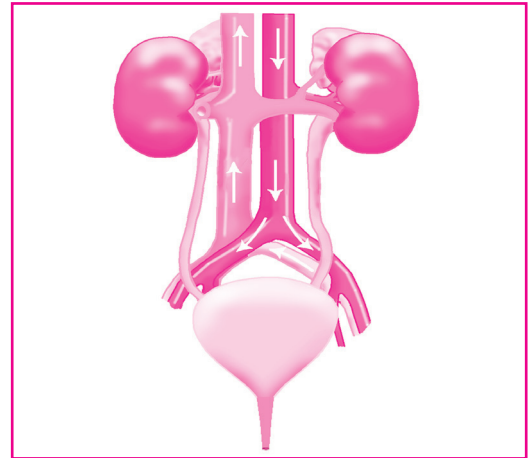
---

(b) What happens when blood passes through the kidneys?

---

---

---



### WORKSHEET

**J. Give reasons for the following.**

1. White blood cells are called the soldiers of our body.

---

---

---

2. The blood in arteries is bright red in colour.

---

---

---

3. Valves are present in veins.

---

---

---

4. Blood flowing in veins is darker in colour.

---

---

---

5. We can see our veins but not arteries.

---

---

---

6. Sometimes a doctor asks the patients to get their urine examined.

---

---

---