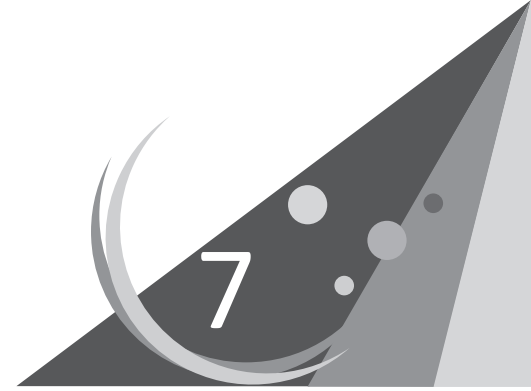


# Data Handling



## LESSON PLAN

### SPECIFIC OBJECTIVES

The students will

- know how to collect data concerning a particular theme.
- learn about pictograph.
- be able to draw and interpret pictograph.
- understand the importance of collection.
- learn to collect data by surveying the people.

### CONTENTS EXPLAINED INSIDE THE CHAPTER

- Collection of Data (pages 133–134)
- Pictograph (page 134)
- Drawing and Interpreting a Pictograph (pages 135–138)

### TEACHING AIDS

A variety of cards, pictures, concrete items, a chart paper, glue, a chalk and a blackboard.

### TEACHING STRATEGY

- First, the teacher should ask the students about the number of articles like desks, benches, chairs, tables, fans, etc., present in the classroom. Then, she should ask the students to complete the table given on page 133.
- Then, she should talk about collection of data to the students given on pages 133–134. For this, she may involve the students to collect some items in a group and record their numbers.
- Next, she should explain them how to represent the data through pictures and symbols. She may prepare a pictograph by pasting few types of cards on a chart paper and display it in the classroom.
- Motivate them to draw a pictograph using simple symbols for a collection of data.
- Moreover, she should ask a few questions based on prepared pictograph and discuss the answers. Then, she should go to pages 134–138 for text and exercise.

- Further, the teacher should discuss about the importance of collection and its use in future. Then, she should move to Value Corner.
- Finally, she should motivate the students to conduct a survey in a group for different purposes and analyse them by displaying it on a chart.

## EXPECTED LEARNING OUTCOMES

Students are able to

- collect the data for a particular theme.
- represent the data through a pictograph.
- understand the given pictograph and answer the related questions.
- understand the use and importance of a collection of data.
- conduct a survey for getting more information.