

**Updated**

**7**



# **TEACHER'S RESOURCE MANUAL**

**➤ Geography ➤ History ➤ Social & Political Life**



**SRIJAN PUBLISHERS P. LTD.**

# Contents

## SECTION 1 — GEOGRAPHY

1. Our Environment ... ..	3
2. Inside Our Earth ... ..	13
3. Our Changing Earth–1 ... ..	23
4. Our Changing Earth–2 ... ..	32
5. Composition and Structure of Atmosphere ... ..	42
6. Weather and Climate ... ..	51
7. Water ... ..	65
8. Ocean Circulation ... ..	73
9. Natural Vegetation and Wildlife ... ..	84
10. Human Environment–1 (Settlements) ... ..	98
11. Human Environment–2 (Transport and Communication) ... ..	109
12. Human Environment Interactions (The Tropical and the Subtropical Regions) ... ..	121
13. Life in Temperate Grasslands (The Prairies and the Velds) ... ..	133
14. Life in the Deserts (Sahara in Africa and Ladakh in India) ... ..	143

## SECTION 2 — HISTORY

1. Periodisation ... ..	153
2. Kings and Kingdoms ... ..	160
3. The Delhi Sultanate ... ..	169
4. The Creation of an Empire ... ..	181
5. Architecture of the Medieval Period ... ..	194
6. Towns, Traders and Craftsmen ... ..	202
7. Social Change – Settled Communities ... ..	210
8. Popular Beliefs and Religious Issues ... ..	216
9. Regional Cultures and Customs ... ..	226
10. Political Situation in the 18th Century ... ..	235

## SECTION 3 — SOCIAL AND POLITICAL LIFE

1. Democracy–Evolution and Focus ... ..	246
2. Institutional Representation of Democracy ... ..	256
3. Health and Hygiene – Role of the Government ... ..	266
4. How Our States are Governed ... ..	272
5. The Role of Media in Democracy ... ..	282
6. Advertising and Advertisements ... ..	290
7. Gender – A Social Issue ... ..	299
8. Women in the Society ... ..	306
9. Market Around Us ... ..	314

# 1. Our Environment

## Worksheet 1

**A** Select the correct option to complete the following sentences:

- Environment stands for our surroundings that include all
  - plants and animals
  - living and non-living things
  - industrial and non-industrial settlements
- The biotic and abiotic components of the natural environment are
  - correlated and interact with each other
  - unaffected by each other
  - found also found on Mars
- Most human needs are met from the
  - hydrosphere
  - lithosphere
  - atmosphere
- The science that studies the relationship between living organisms and their environment is called
  - biology
  - ecology
  - sociology
- Man's activities have created
  - development of the human brain
  - new species of plants and animals
  - an ecological imbalance

**B** Explain the following statements:

- The components of the natural environment are dynamic in nature.

---

---

---

---

---

- The actual degradation of the environment is due to man's activities.

---

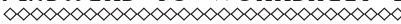
---

---

---

---

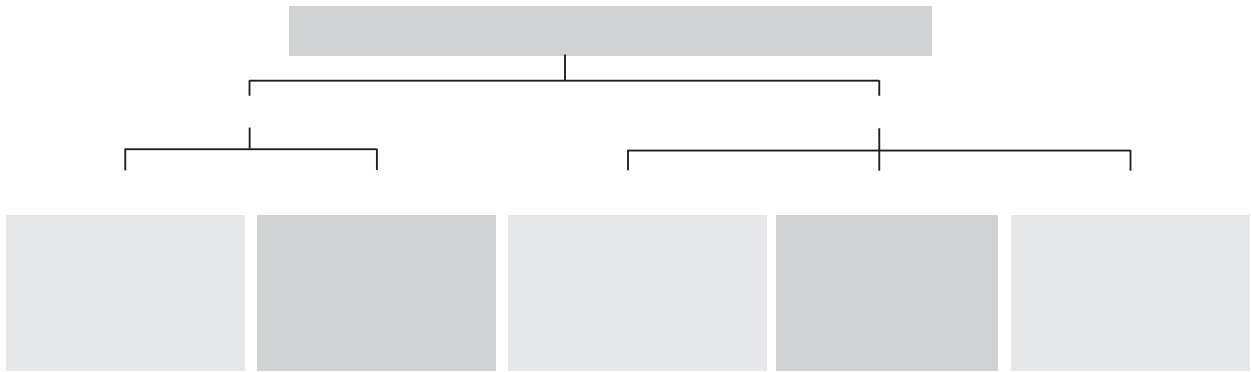
### **ANSWERS TO WORKSHEET I**



- A. 1. (b) 2. (a) 3. (b) 4. (b) 5. (c)
- B. 1. The components of the natural environment are interrelated and interact with each other. A change in one component creates a change in the other aspects of the environment. Thus, the components are dynamic in nature.
2. Man has disturbed the ecological balance through farming, grazing, lumbering, mining, industries, transport, construction and communication. Therefore, his activities have led to the degradation of the environment.

# Worksheet 2

(A) Draw a chart to show the components of the environment.

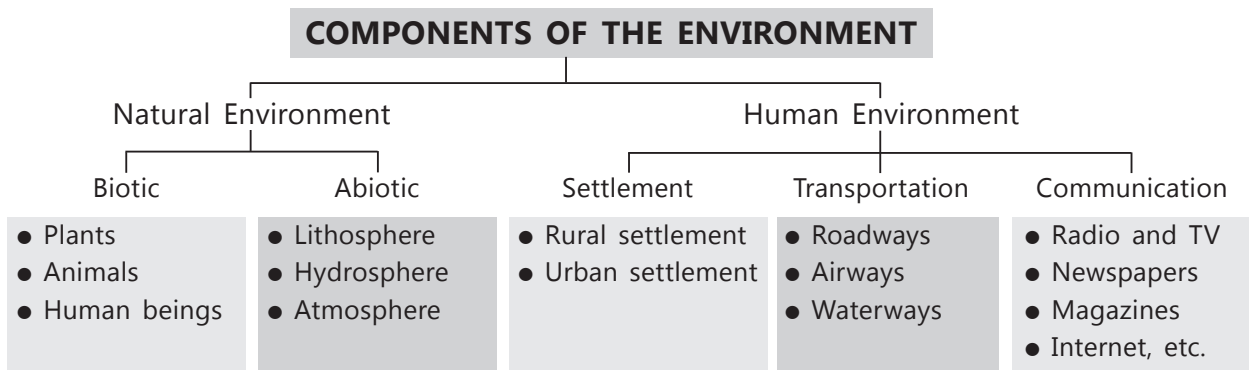


(B) Draw the hydrological cycle.



## ANSWERS TO WORKSHEET 2

A.



B. Give a pictorial chart of the hydrological cycle:

Oceans → warm up → water evaporates → forms clouds → drift towards land → condensation → movement and rain → fill up water bodies